

Motive Battery

Energy Storage Battery

Reserve Battery

Motorcycle Battery



Industry Battery-General Purpose AGM Battery-TN Series

TN12-250

(12V 250Ah)

GENERAL FEATURES

- ♦ Oxygen recombination technology: maintenance-free, no need to add water or acid
- ♦ The patent grid alloy: less gassing, low self-discharge, excellent corrosion resistance
- ♦ Design life is 7~9 years at 25°C under standby application, deep discharge recoverability
- ♦ High quality AGM separator: extend cycle life and prevent micro short circuit
- ♦ ABS container: increase the strength of battery (Flame-retardant ABS UL94-V0 is optional)

Dimension

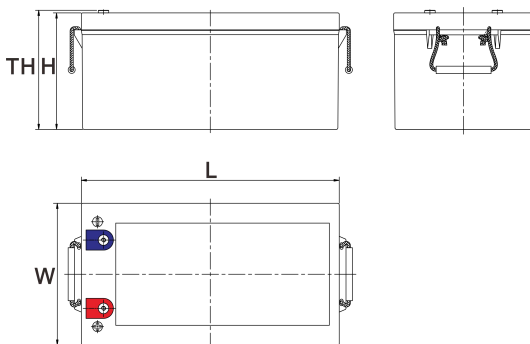
Unit:mm

Length 522±2mm / 20.55inch

Width 268±2mm / 10.55inch

Container Height 220±3mm / 8.66inch

Total Height 226±3mm / 8.9inch



Application

- ♦ Uninterrupted Power Supply (UPS)
- ♦ Communications and electric equipment
- ♦ Emergency lighting equipment
- ♦ Fire alarm and security system
- ♦ Robots, control equipment, and other factory automation equipment
- ♦ Emergency power supply (EPS)
- ♦ Portable VTR/TV, radio and so on
- ♦ Power tools, lawn mowers, vacuum cleaners
- ♦ Cameras and photographic equipment
- ♦ Portable measuring equipment
- ♦ Portable telephone sets
- ♦ Various power toys and hobby equipment
- ♦ Lighting equipment

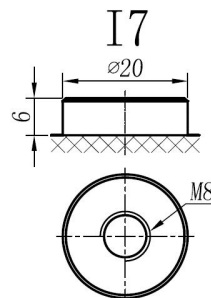
Terminal

Unit:mm

Terminal Type: I7

Weight

72.5kg 159.83lbs



This document is subject to change without prior notification

Motive Battery

 Energy Storage Battery

 Reserve Battery

 Motorcycle Battery


TN12-250

Specificaion

Nominal Voltage	12V	
Rated Capacity(25°C)	260Ah	20hr Rate(1.80V/cell)
	250Ah	10hr Rate(1.80V/cell)
	218Ah	5hr Rate(1.75V/cell)
	204Ah	3hr Rate(1.70V/cell)
	155Ah	1hr Rate(1.60V/cell)
Container Material	ABS (Flame-retardant ABS UL94-V0 is optional)	
Operating Temperature Range	Discharge	-20 ~ +50°C
	Charge	0 ~ +40°C
	Storage	-15 ~ +40°C
Capacity Effected by Temperature	40°C / 104°F	106%
	25°C / 77°F	100%
	0°C / 32°F	86%
	-10°C / 14°F	65%
Charge	Float Voltage	2.23 -2.27V/cell@25°C, Tem.Coefficient : -3mV/cell/°C
	Equalize Voltage	2.35 -2.40V/cell@25°C, Tem.Coefficient : -3mV/cell/°C
	Cycle Voltage	2.40 -2.50V/cell@25°C, Tem.Coefficient : -5mV/cell/°C
Max. Charging Current	75A (0.3C)	
Max. Discharge Current (5S)	2500A	
Internal Resistance	2.5mΩ	
Self-Discharge	<3%, TN series stored at 25 °C require a supplementary charge every six months, the charging interval would shrink when the ambient temperature went higher	

Discharge Performance

Constant Current Discharge Table (25°C/77°F) Unit: A

F.V/Time	10min	15min	20min	30min	45min	1h	2h	3h	4h	5h	6h	8h	10h	20h
1.85V/cell	336.7	286.4	239.5	190.4	146.1	119.67	76.23	60.29	49.23	39.69	34.34	27.88	23.62	12.913
1.80V/cell	430.2	346.0	283.2	224.6	169.9	133.98	83.13	64.86	52.58	42.63	36.87	29.59	25.03	13.013
1.75V/cell	472.8	378.0	304.6	233.2	176.3	140.17	86.28	66.08	53.69	43.65	37.88	30.10	25.33	13.113
1.70V/cell	\	403.5	320.1	242.7	183.4	144.64	89.73	67.90	55.11	44.86	38.68	30.50	25.53	13.413
1.67V/cell	\	429.0	340.0	256.1	188.0	149.51	92.16	70.75	57.04	46.08	39.49	31.01	26.03	13.514
1.60V/cell	\	458.9	362.3	270.4	195.9	154.79	95.31	72.98	58.87	47.60	40.40	31.31	26.33	13.614

Constant Power Discharge Table (25°C/77°F) Unit: W

F.V/Time	10min	15min	20min	30min	45min	1h	2h	3h	4h	5h	6h	8h	10h	20h
1.85V/cell	622.0	534.3	451.5	362.9	277.0	227.53	145.95	115.82	94.89	76.68	66.97	54.55	46.75	25.526
1.80V/cell	785.4	636.9	525.8	421.6	319.6	253.55	158.16	123.92	100.80	81.98	71.57	57.76	49.45	25.726
1.75V/cell	849.1	687.2	560.3	434.0	328.5	264.06	163.46	125.73	102.70	83.88	73.27	58.56	49.85	25.926
1.70V/cell	\	723.4	584.4	449.2	340.3	271.47	169.57	129.03	105.21	85.79	74.67	59.36	50.35	26.426
1.67V/cell	\	763.4	616.2	470.1	345.7	278.58	173.37	133.83	108.41	87.89	76.08	60.16	51.25	26.727
1.60V/cell	\	802.9	649.2	492.8	358.4	286.99	178.28	137.34	111.41	90.49	77.48	60.56	51.75	26.827

☐ 动力电池

■ 储能电池

■ 备用电池

☐ 摩托车电池



阀控式免维护铅酸蓄电池-通用型

TN12-250

(12V 250Ah)

产品特点

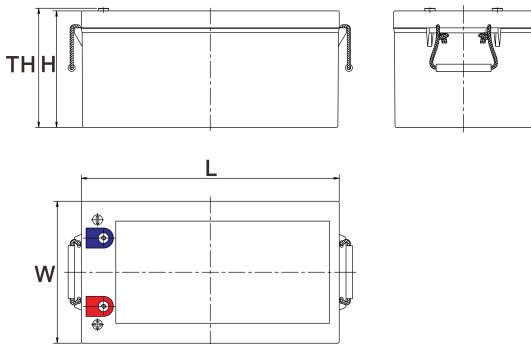
- ◆ 阀控式免维护设计，寿命期间无需加水或加酸
- ◆ 专利稀土合金板栅，减少气体产生，自放电率低，抗腐蚀能力出众
- ◆ 在25°C下，产品浮充设计寿命为7~9年，优良的深放电恢复能力
- ◆ 高质量AGM隔板：防止微短路，延长循环寿命
- ◆ ABS壳盖：电池外壳强度高（阻燃壳体UL94-V0可选）



尺寸

单个尺寸

长	522±2mm
宽	268±2mm
高	220±3mm
总高	226±3mm



产品应用

- ◆ 不间断电源(UPS)
- ◆ 通信和电力设备
- ◆ 紧急照明设备
- ◆ 火灾报警及安防系统
- ◆ 机器人、控制设备及其他机械自动化设备
- ◆ 应急电源系统
- ◆ 便携式音频设备
- ◆ 电动工具，割草机，真空吸尘器
- ◆ 照相设备
- ◆ 便携式测量工具
- ◆ 便携式通话设备
- ◆ 各式电动玩具及娱乐设施
- ◆ 照明设备

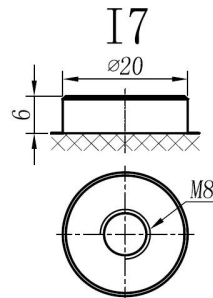
端子类型

单位:mm

端子类型 I7

重量

72.5kg 159.83lbs



内容如有改动，恕不另行通知



ISO9001 ISO14001 OHSAS18001

天能电池集团有限公司

长兴天能进出口有限公司

www.tiannenggroup.com

版本：

V1.0

发行日期：

2016/7/1

©2016 天能集团 版权所有，保留一切权利；商标所有权属于天能集团及其附属机构

浙江省长兴画溪工业区包桥路18号天能集团 邮编：313199

动力电池

储能电池

备用电池

摩托车电池



TN12-250

规格书

额定电压	12V	
容量(25°C)	260Ah	20hr Rate(1.80V/cell)
	250Ah	10hr Rate(1.80V/cell)
	218Ah	5hr Rate(1.75V/cell)
	204Ah	3hr Rate(1.70V/cell)
	155Ah	1hr Rate(1.60V/cell)
壳体材料	ABS (阻燃ABS壳体可选)	
使用温度范围	放电	-20 ~ +50°C
	充电	0 ~ +40°C
	储存	-15 ~ +40°C
不同温度下 电池容量系数	40°C / 104°F	106%
	25°C / 77°F	100%
	0°C / 32°F	86%
	-10°C / 14°F	65%
充电	浮充电压	2.23 -2.27V/单格@25°C, 温度补偿系数: -3mV/单格/°C
	均充电压	2.35 -2.40V/单格@25°C, 温度补偿系数: -3mV/单格/°C
	循环使用电压	2.40 -2.50V/单格@25°C, 温度补偿系数: -5mV/单格/°C
最大充电电流	75A (0.3C)	
最大放电电流 (5S)	2500A	
电阻	2.5mΩ	
自放电	<3%, TN系列储存在25°C 时需每6个月进行一次补充充电, 环境温度更高时则充电间隔时间越短	

放电性能

恒电流放电表 (25°C/77°F) 单位: A														
F.V/Time	10min	15min	20min	30min	45min	1h	2h	3h	4h	5h	6h	8h	10h	20h
1.85V/cell	336.7	286.4	239.5	190.4	146.1	119.67	76.23	60.29	49.23	39.69	34.34	27.88	23.62	12.913
1.80V/cell	430.2	346.0	283.2	224.6	169.9	133.98	83.13	64.86	52.58	42.63	36.87	29.59	25.03	13.013
1.75V/cell	472.8	378.0	304.6	233.2	176.3	140.17	86.28	66.08	53.69	43.65	37.88	30.10	25.33	13.113
1.70V/cell	\	403.5	320.1	242.7	183.4	144.64	89.73	67.90	55.11	44.86	38.68	30.50	25.53	13.413
1.67V/cell	\	429.0	340.0	256.1	188.0	149.51	92.16	70.75	57.04	46.08	39.49	31.01	26.03	13.514
1.60V/cell	\	458.9	362.3	270.4	195.9	154.79	95.31	72.98	58.87	47.60	40.40	31.31	26.33	13.614

恒功率放电表 (25°C/77°F) 单位: W														
F.V/Time	10min	15min	20min	30min	45min	1h	2h	3h	4h	5h	6h	8h	10h	20h
1.85V/cell	622.0	534.3	451.5	362.9	277.0	227.53	145.95	115.82	94.89	76.68	66.97	54.55	46.75	25.526
1.80V/cell	785.4	636.9	525.8	421.6	319.6	253.55	158.16	123.92	100.80	81.98	71.57	57.76	49.45	25.726
1.75V/cell	849.1	687.2	560.3	434.0	328.5	264.06	163.46	125.73	102.70	83.88	73.27	58.56	49.85	25.926
1.70V/cell	\	723.4	584.4	449.2	340.3	271.47	169.57	129.03	105.21	85.79	74.67	59.36	50.35	26.426
1.67V/cell	\	763.4	616.2	470.1	345.7	278.58	173.37	133.83	108.41	87.89	76.08	60.16	51.25	26.727
1.60V/cell	\	802.9	649.2	492.8	358.4	286.99	178.28	137.34	111.41	90.49	77.48	60.56	51.75	26.827