



**CTEK MXS 5.0
CHECK**

5 A



COMBINED BATTERY CHARGER AND BATTERY & ALTERNATOR CHECK CTEK MXS 5.0 CHECK

CTEK MXS 5.0 CHECK is a unique combination of a battery and alternator check instrument as well as a new generation battery charger with exceptional features.

MXS 5.0 CHECK offers; battery diagnosis, a special reconditioning option, unique maintenance charging and a option for optimised charging during cold winter days and charging of demanding AGM batteries. MXS 5.0 CHECK can be used with both charge options at the same time. MXS 5.0 CHECK is a fully automatic 8-step charger that delivers selectable 0.8A or 5A to 12V batteries from 1,2-110Ah and is suitable for maintenance charging up to 160Ah.

The check instrument is extremely easy to use and consist of three voltage check programs: BATTERY, START POWER and ALTERNATOR. MXS 5.0 CHECK three voltage check programs works both with and without 230V supply. The charger is delivered with a 5-year warranty.

TECHNICAL DATA

CHARGING VOLTAGE	14.4/14.7/15.8 V
CHARGING CURRENT	Max 5 A
TYPE OF CHARGER	8 step, fully automatic charging cycle, 3 voltage check programs
TYPE OF BATTERY	12 V lead-acid batteries
BATTERY CAPACITY	1.2-110 Ah, up to 160 Ah for maintenance
INSULATION	IP65 (splash and dust proof)



Fully automatic for optimal charging



For all lead-acid batteries



FULLY CHARGED BATTERY



Maintenance charging



For charging in cold conditions and AGM batteries

RECOND

Recondition of deeply discharged batteries



Check battery charge level.



Check battery start power



Check alternator performance

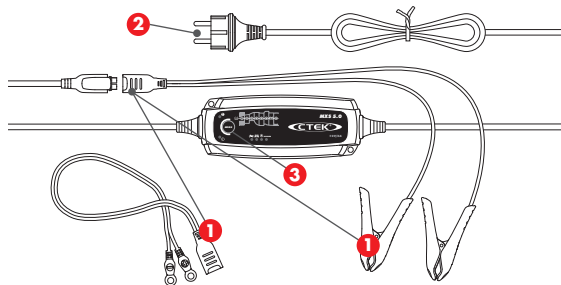


THE SMARTEST BATTERY CHARGERS IN THE WORLD



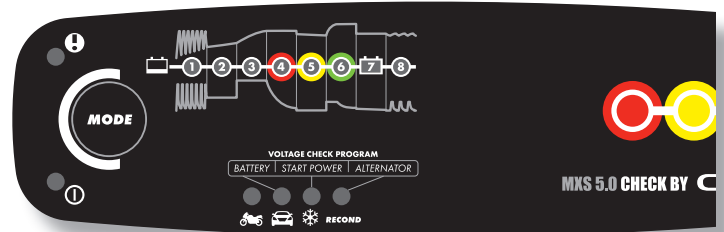
- Unique 3 voltage check programs
- The 3 voltage check programs works both with and without 230V-supply
- Multi combination modes for selectable options for all programs.
- Fully automatic charging and maintenance in 8 steps maximizes battery life and performance
- Numerous accessories simplifies using the same charger for multiple batteries
- One charger for the car, motorcycle, lawn mower, snowmobile, and tractor
- Water-resistant so that the solution could be taken to the problem even if it rains or snows
- Patented maintenance charge for a unique combination of maximized life and performance
- Recondition of deep discharged batteries
- Patented desulphation that extends the battery life
- No sparks, short-circuit proof and reverse-polarity protected for untroubled usage
- Automatic detection of end-of-life batteries that eliminates surprises

CHARGING



- 1. Connect the charger to the battery.**
- 2. Connect the charger to the wall socket.**
Power-on lamp lights
- 3. Press the MODE-button to select charging program.**
 - Small sized batteries
 - Medium sized batteries
 - Charging in cold conditions and AGM batteries requiring 14.7 V charging
 - RECOND** Reconditioning of deeply discharged batteries
- 4. ... and ready.**

CHECKING



- 1. Press the Mode-button for 2 seconds to select CHECK VOLTAGE program**

2. Choose a VOLTAGE CHECK PROGRAM:

BATTERY: checking the battery performance.

START POWER: checking the battery's performance when cranking.

ALTERNATOR: checking the alternator or generator performance.

3. Check the result:

	BAD 	FAIR 	OK
CHECK BATTERY	-12.4V	12.4-12.65V	12.65V-
CHECK START POWER	-9.6V	9.6-10.5V	10.5V-
CHECK ALTERNATOR	-13.3V	13.3-14.0V	14.0V-

CTEK's UNIQUE 8 STEP CHARGING



- 1 STEP 1 DESULPHATION**
- 2 STEP 2 SOFT START**
- 3 STEP 3 BULK**
- 4 STEP 4 ABSORPTION, READY TO USE**
- 5 STEP 5 ANALYSE**
- 6 STEP 6 RECOND**
- 7 STEP 7 FLOAT, FULLY CHARGED**
- 8 STEP 8 PULSE, MAINTENANCE CHARGING**